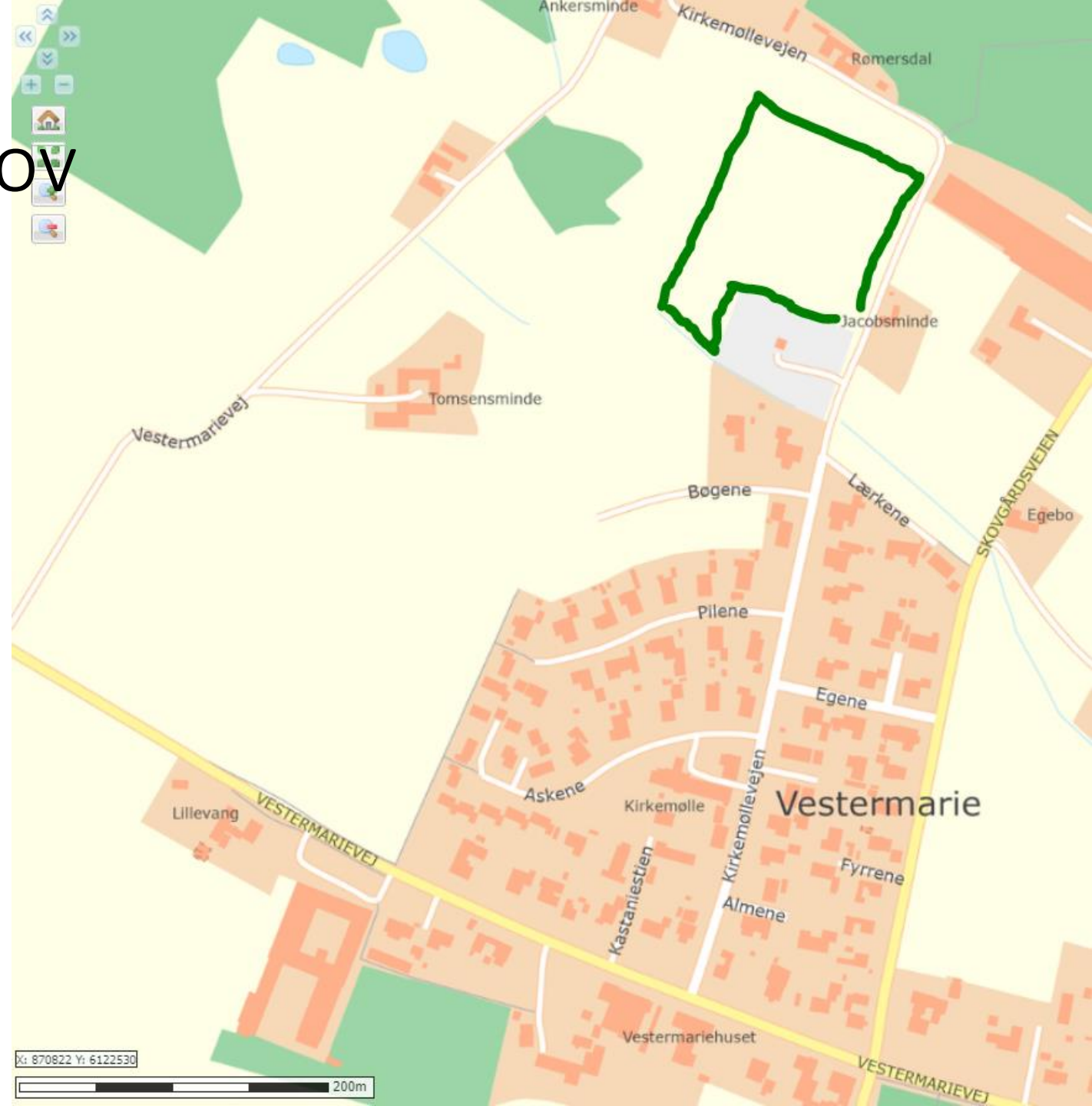


Skovrejsning

Alle projekter starter med et politisk dagsordenspunkt

Vestermarie Folkeskov

- 1,2 ha
- 5000 planter
- 60.000 kr
- Lokal dialogproces
- Støttet projekt
- Brede rammer
- Aktive borgere



Vestermarie Folkeskov

- Dialog omkring skovens overordnede indretning
- Egearboret
 - Formidling og oplevelsesrum
- Byens gadenavne
- Stor lysning som byens rum

Borgerforeningen tog fat

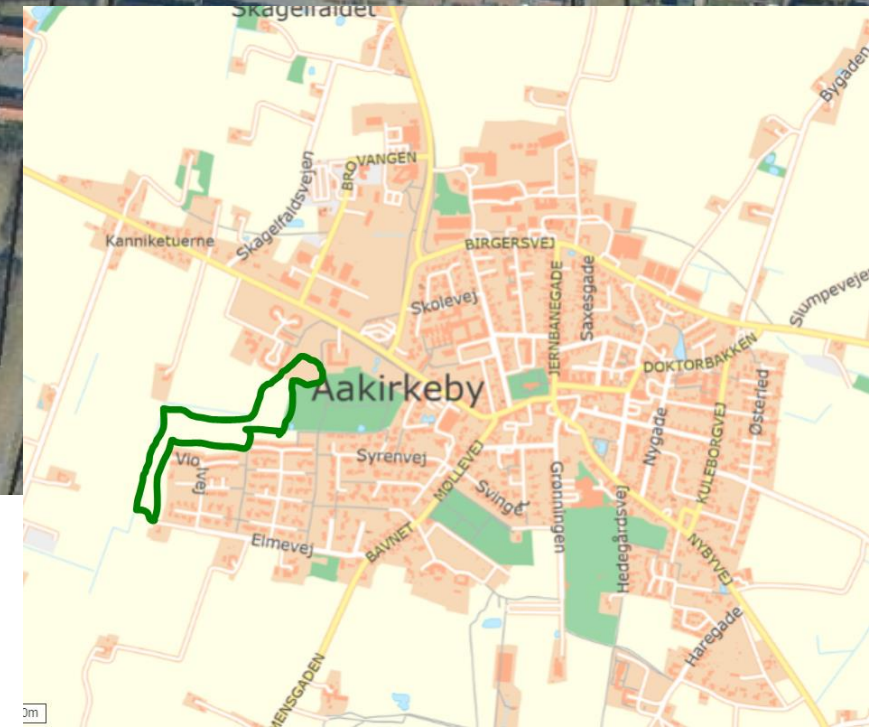
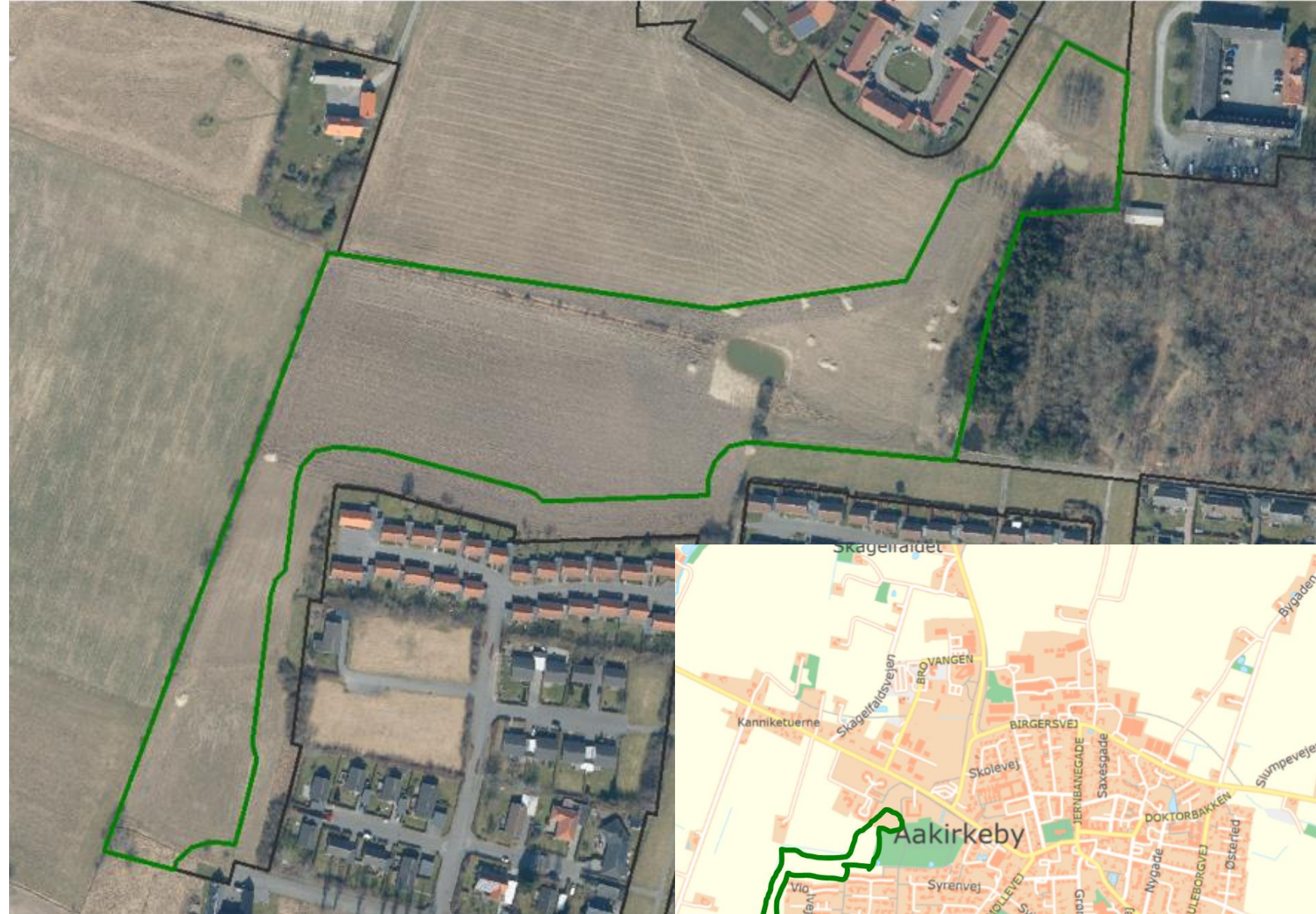
- Bålhytte
- Sheltere
- legeredskaber
- Inventar figurer

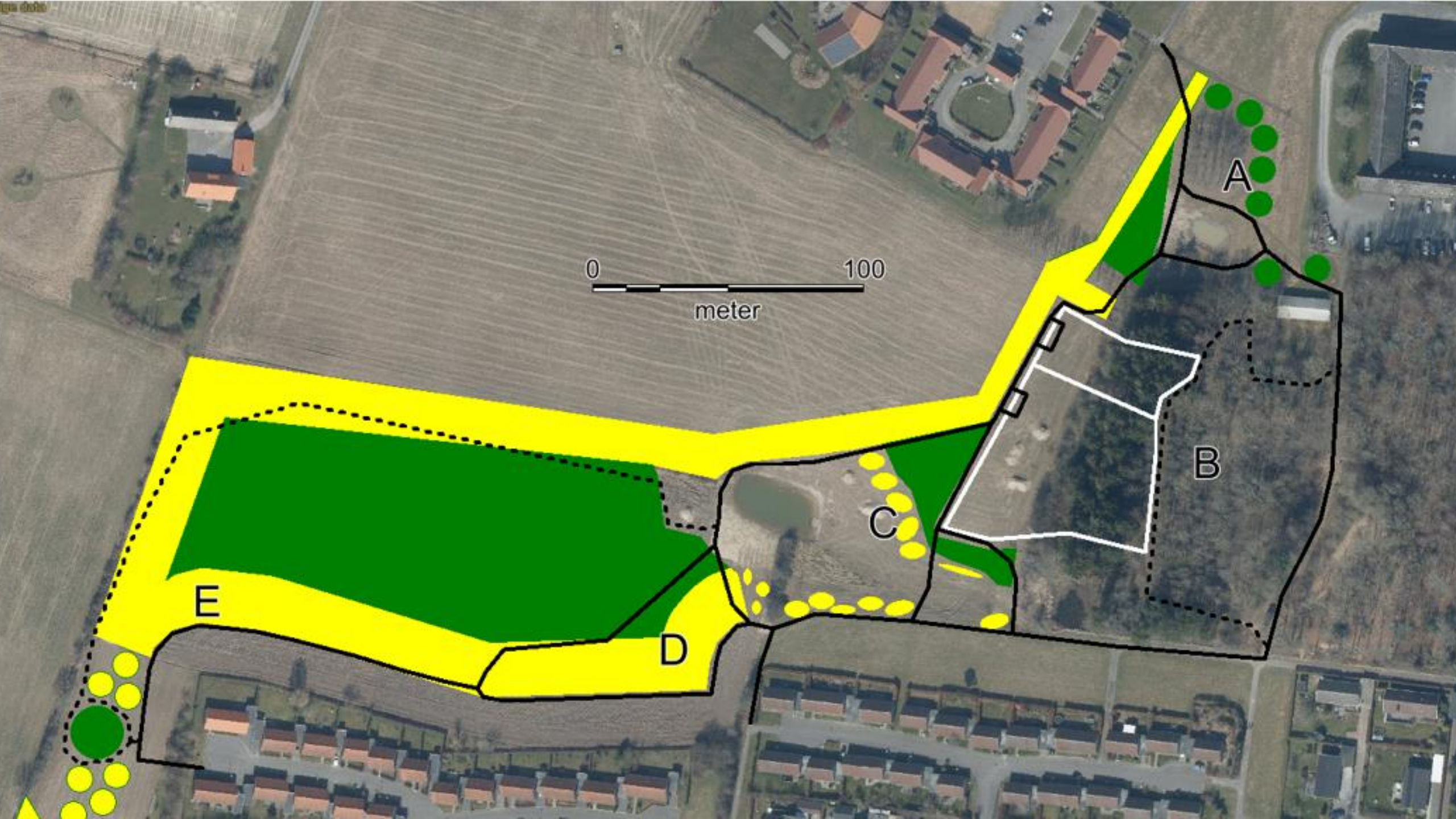




Åkirkeby

- 4,7 ha
- 18.800 træer og buske
- 225.000 kr
- Vandhuller 50.000 kr
- Grussti 600.000 kr
- Lokal dialogproces
- Støttet projekt
- Aktive borgere
- Hundelufferplads
- Skoleskov
- Sommerfuglepark





0 100
meter

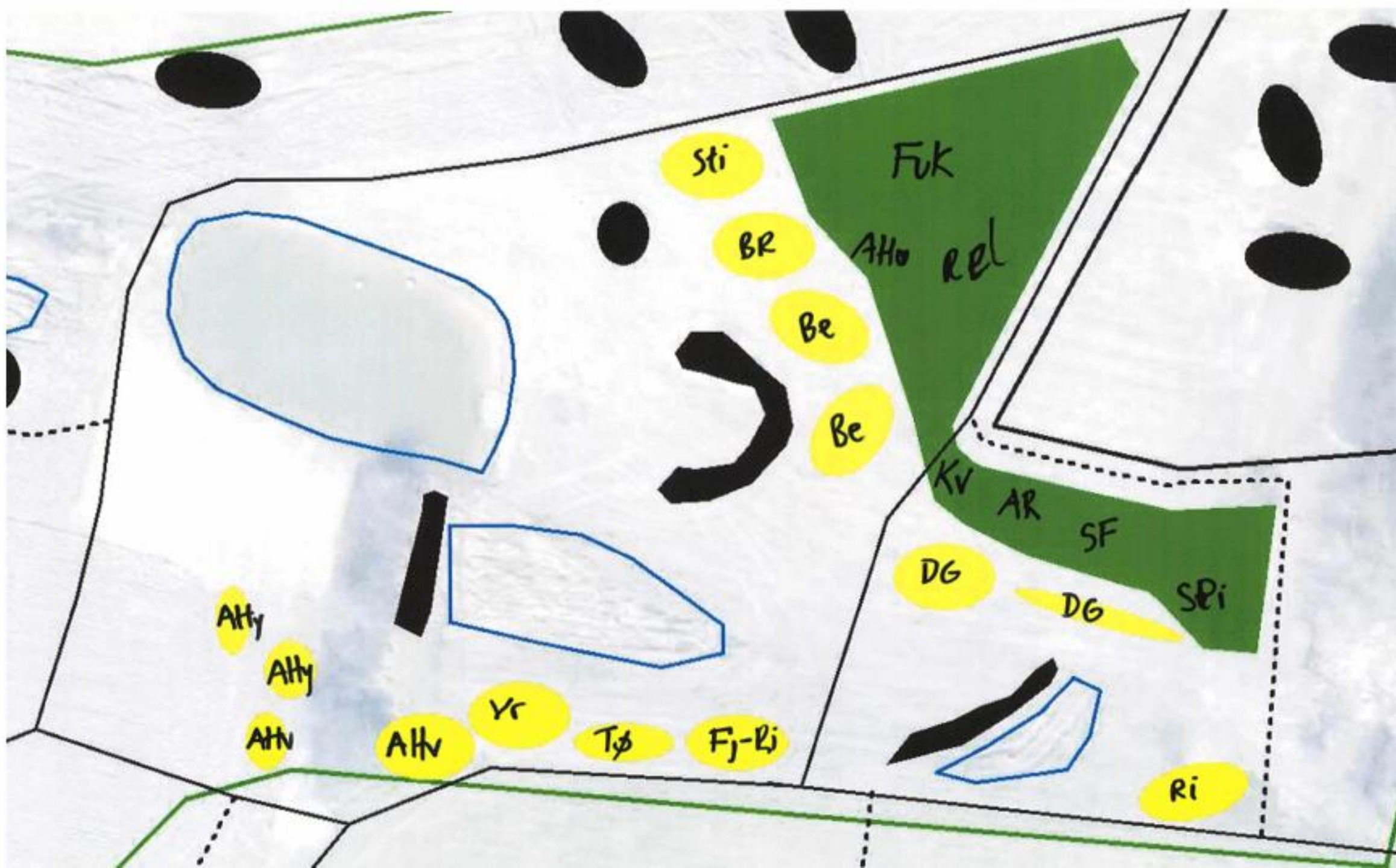
A

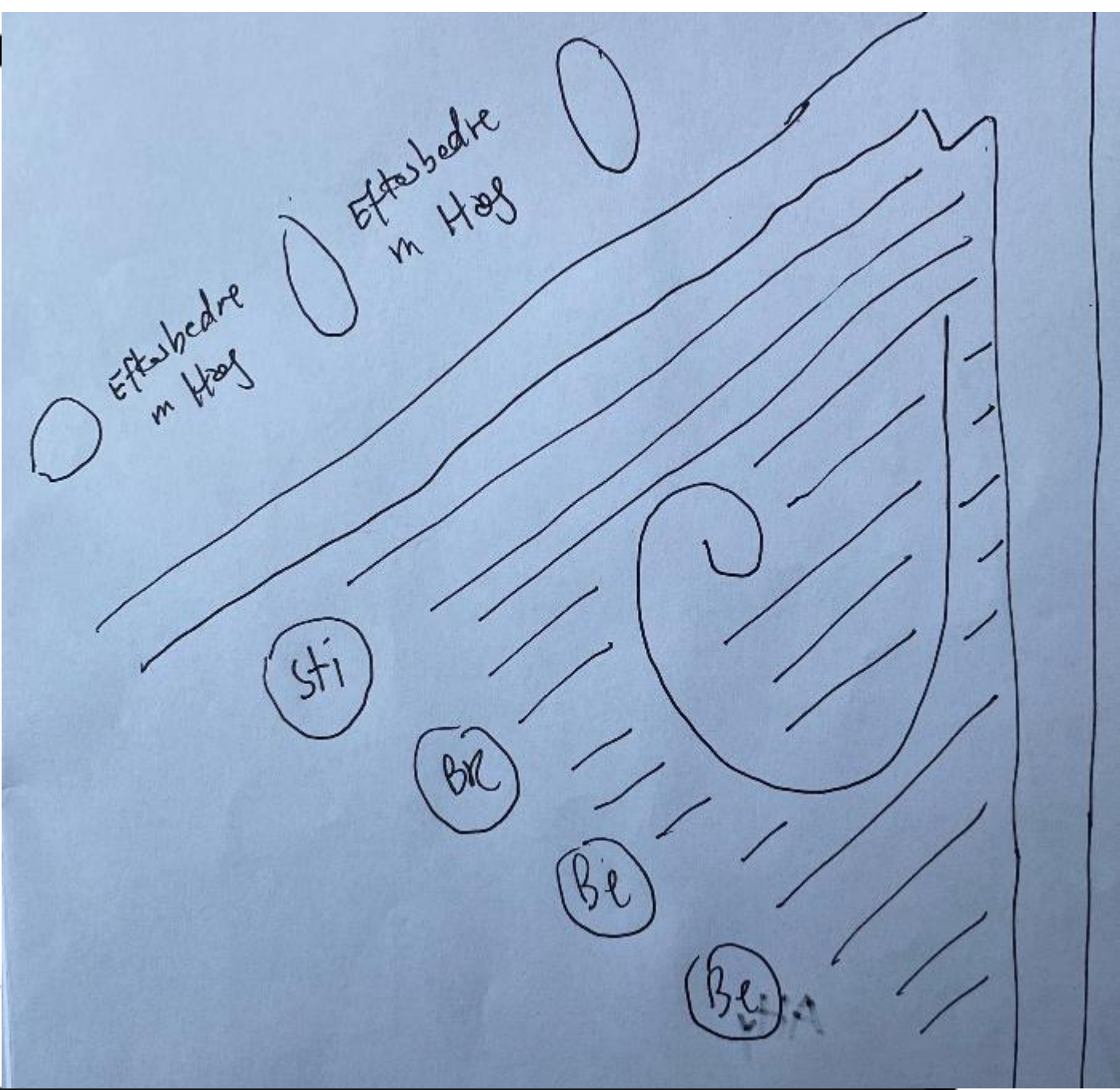
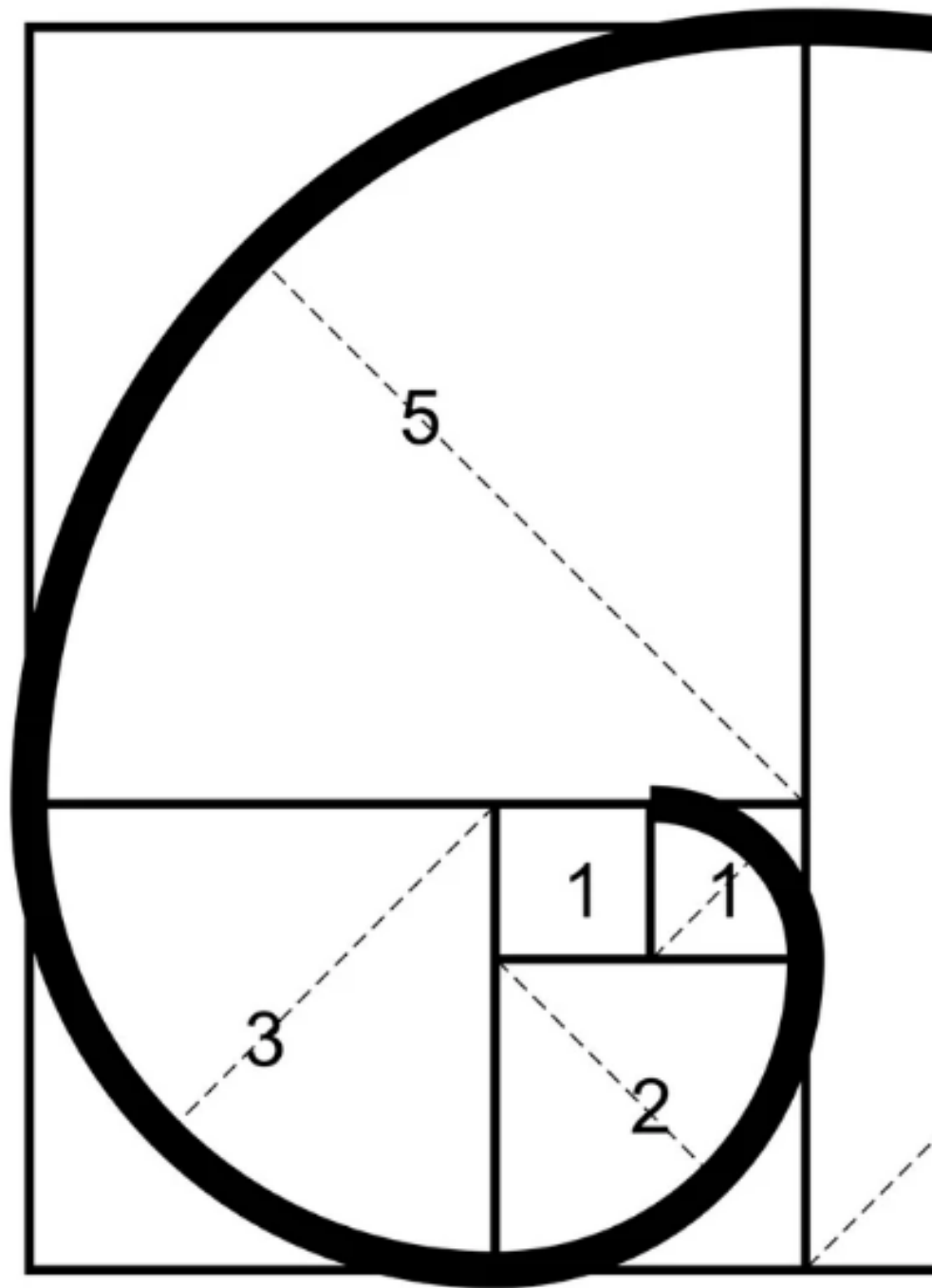
B

C

D

E





Måske klimaskov ved Hasle